



## DATA BANK SDB4 3.5" External 4xHDDs Enclosure

### Installation/User Manual

#### 1. Overview

Turn up to 4 x 3.5" SATA hard drives into one large mobile USB external storage device (Max 8TB). Features Push/Pull Design HDD Rails, 8cm cooling Fan, USB2.0 (480mb/s), JBOD/BIG, Auto Power ON/OFF Function, anti shock design, plug&play, insulating PCB, Stylish front Blue LED...etc.

##### 1.1 Features

- 4-bays 3.5" HDD enclosure
- Interface: SATA I, II to USB 2.0 (480mb/s).
- Support 4 X 3.5" SATA I, II Hard drives
- Support JBOD (2 Separated Disk - Standard Mode) or BIG (1 Bunched Disk - Spanning Mode)
- External JBOD/BIG jumper switch
- Push/Pull Design HDD Rails (no hard drive screw involved, extremely easy to install, upgrade or replace HDDs)
- External Auto Power On/Off switch (Turn on/off automatically when PC is on/off)
- 8cm rear cooling Fan and Panel with air vent for ultimate cooling effect
  
- Anti-shock design
- Hot swappable and truly Plug-n-Play
- Insulating designed PCB
- Soft-start for slow turn-on feature prevents high inrush currents
- Backward compatible with USB 1.1
- One year manufacturer's limited warranty.
- Free unlimited online support

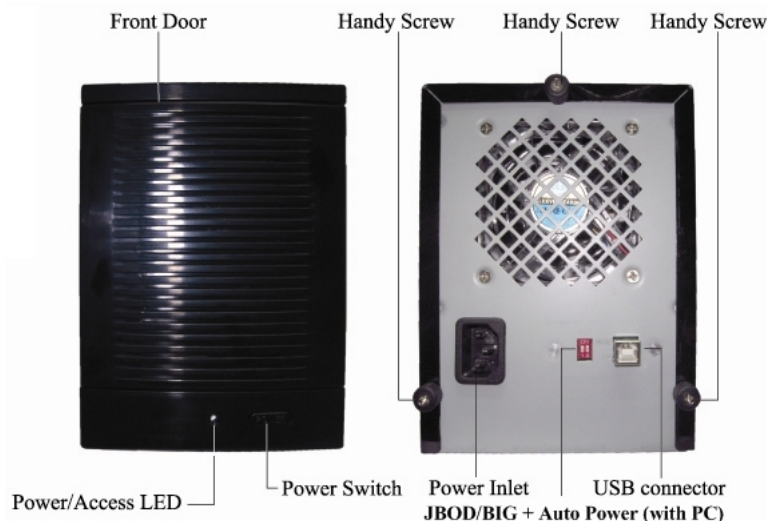
##### 1.2 Specifications

- OS support: Windows Vista/XP/2000/ME, MAC OS (No Drivers required)
- Power supply: AC100~240V,50~60Hz;DC5V/3A+DC12V/3A
- Case material: ABS + SECC
- Compact Size: L260 x W135 x H185(mm)
- Weight: 2.70 KG

##### 1.3 Packing Content

- TSUNAMI DATA BANK SDB4 Enclosure x 1
- USB 2.0 Cable x 1
- Power Supply Cable x 1
- Hard drive rails x 8
- Installation/User manual x 1

##### 1.4 Front View / Rear View



**Fig-01**

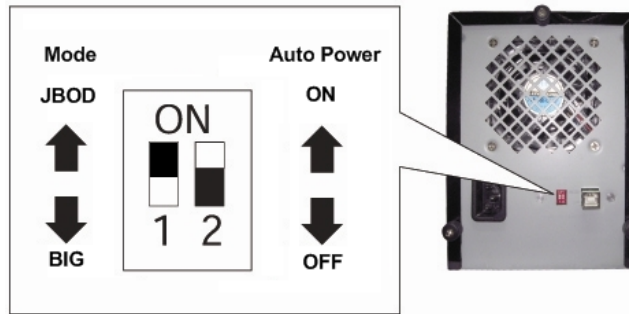
## 2 Installation

### 2.1 Notes before installation

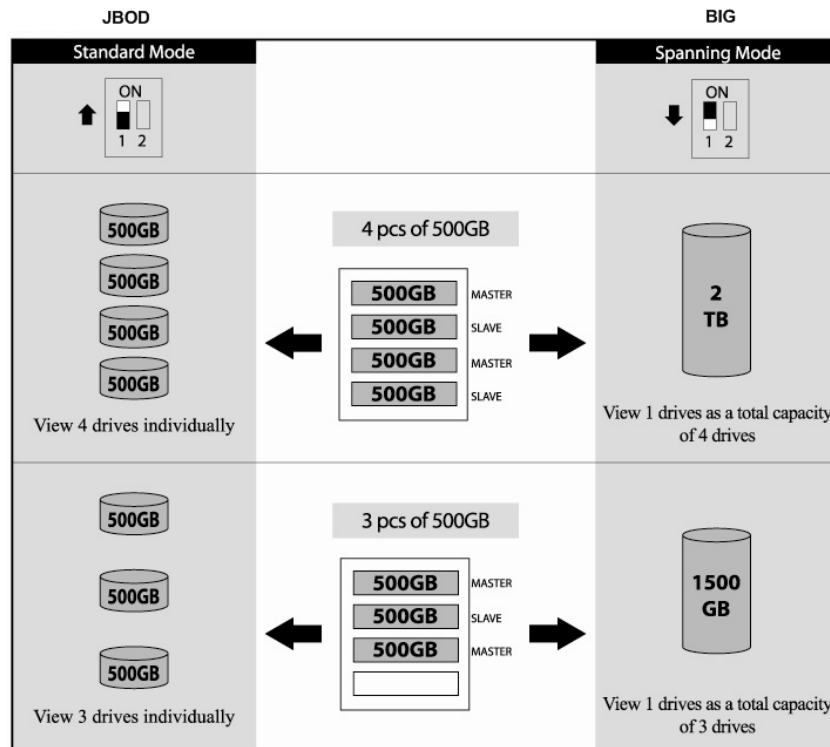
- Do not connect power supply cable during HDDs installation
- Before hard drives installation, discharge static electricity from your body by touching the metal frame of the enclosure or the like.

### 2.2 Hard Drives Installation

1-Select the mode(JBOD/BIG) and Auto Power function required by selecting the appropriate switches at the rear of the unit.

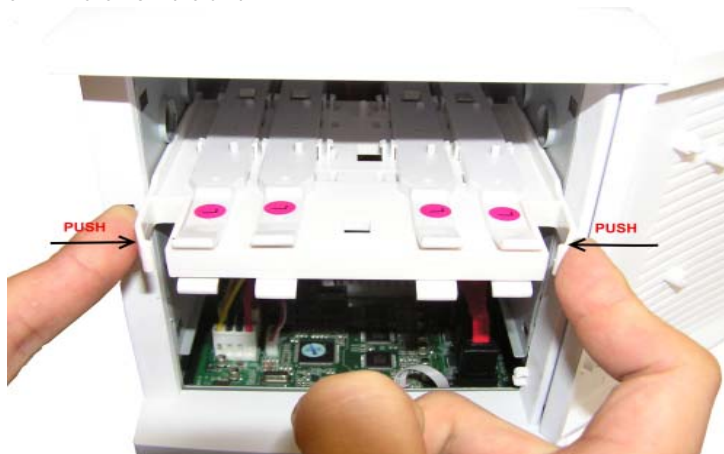


**Fig - 02**



**Fig - 03**

2-Open front panel and remove HDD rails from the unit.



**Fig - 04**

3-Attach hard drives to the HDD rails. Pull out SATA connectors and their power cables, then slot the hard drives into the unit (no screw involved).



**Fig – 05**

4-Connect SATA cables and their power supply cables.



**Fig – 06**

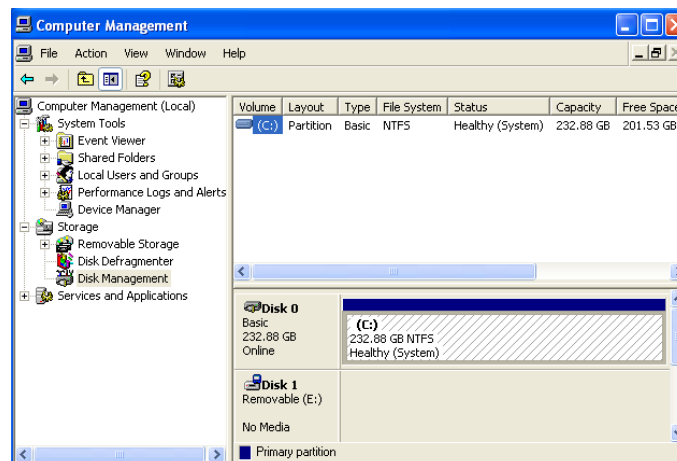
5-Close front panel.

6-Connect power cable and USB cable

7-Press front On/OFF button to switch on the unit. To switch off, press and hold the ON/OFF button for 3 seconds.

8-Format hard drives (if required) under Window's 'Disk management' or MAC's 'Disk Utility'.

Note: Remember to back up all important data on the hard drives before formatting them.



8-Installation complete

Thank you for using TSUNAMI products!