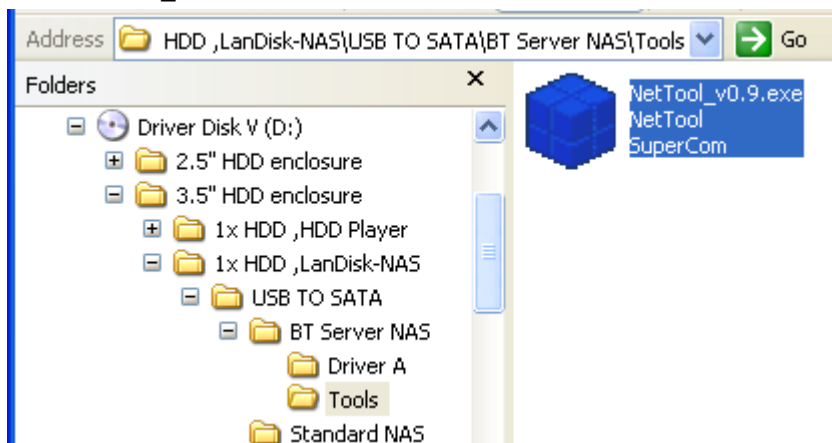


TSUNAMI EDATA 3500 NAS BT – QUICK SETUP GUIDE

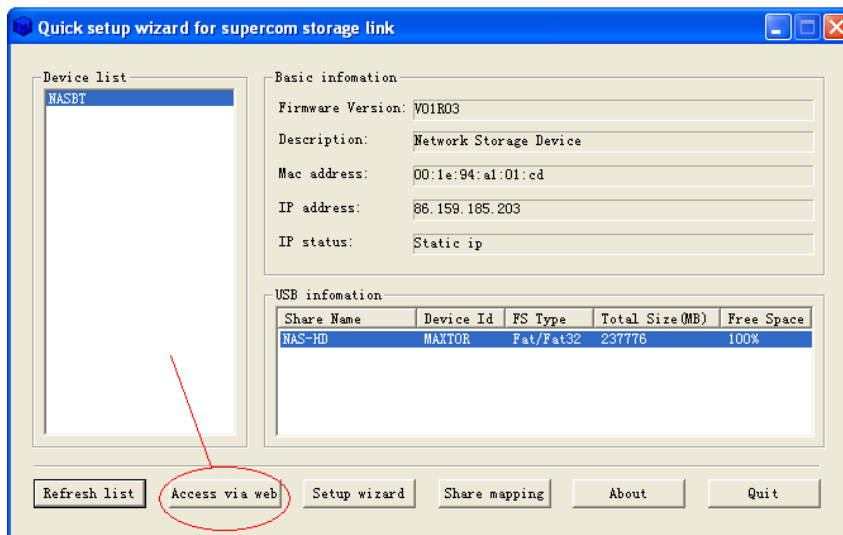
1. Install hard drive (connect sata cables as below)



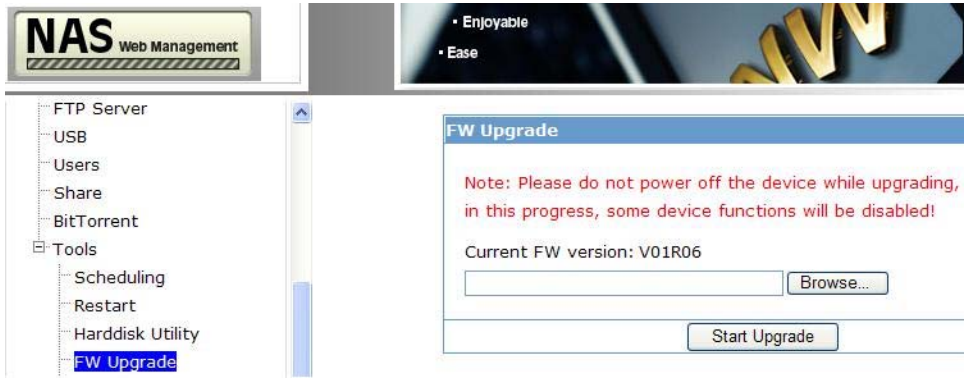
2. Connect PSU and LAN cable (do not connect USB cable)
3. Switch on the unit, click the 'DEFAULT' button for 5 seconds, the Switch off and on again
4. Download latest NAS BT firmware from www.tsunami-tech.co.uk
5. Click netTool_v0.9.exe from CD



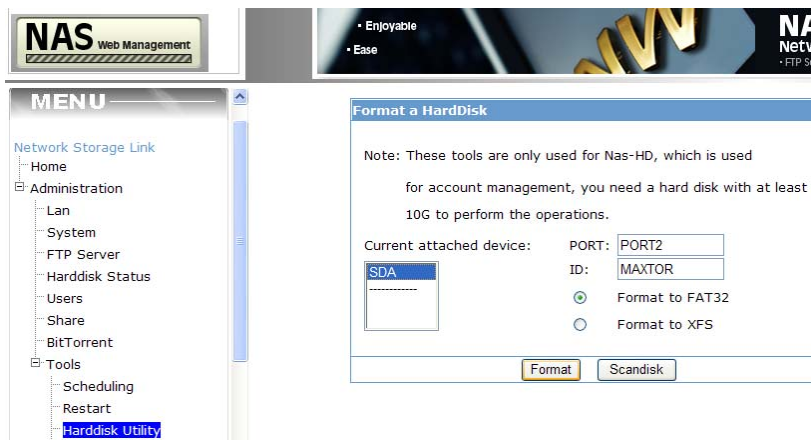
6. Click 'Access via web' (*NOTE: ONLY COMPATIBLE WITH 'WINDOWS INTERNET EXPLORER', do not use any other browser ie Firefox....etc for setup*)



7. Upgrade the latest firmware accordingly (Note: When prompt, log-in=**admin**, pass=**root**)



8. Close web management. Click 'Nettool' (from CD), then 'access via web' and format the Hard drive



9. Restart the computer and EDATA NAS BT unit (switching the on/off switch)

10. You should be able to see the Hard drive connected to your network now

