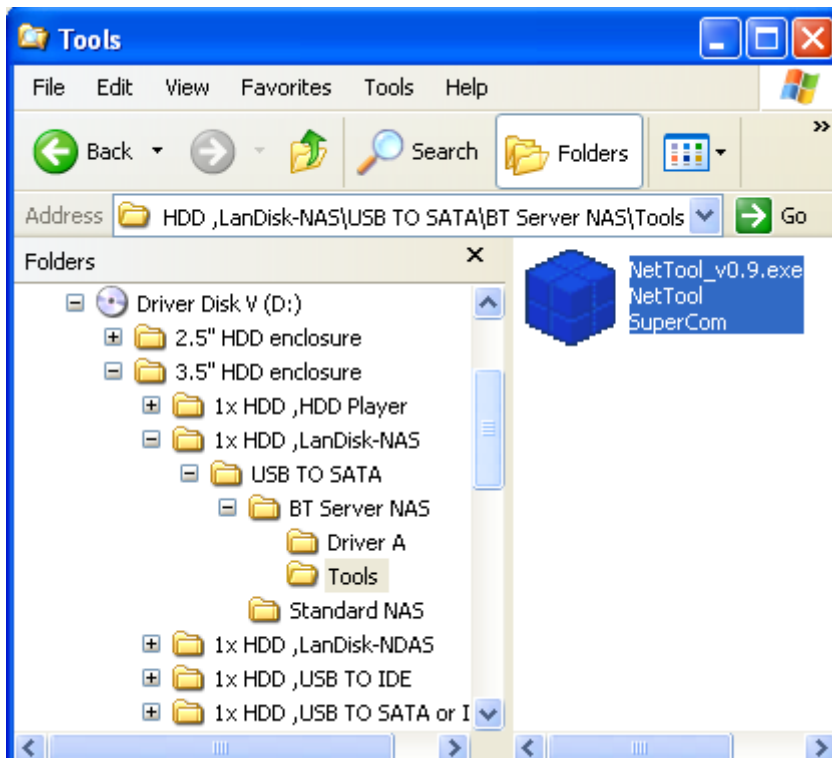


TSUNAMI EDATA 3500 NAS BT – QUICK SETUP GUIDE

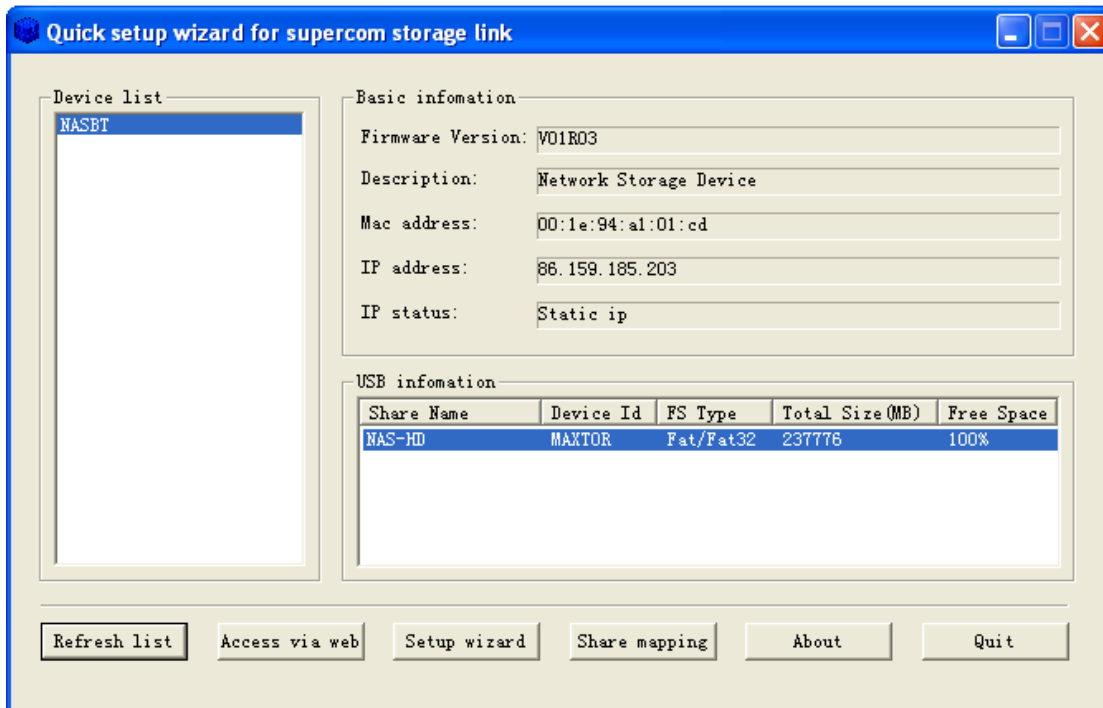
1. Install hard drive (connect sata cables as below)



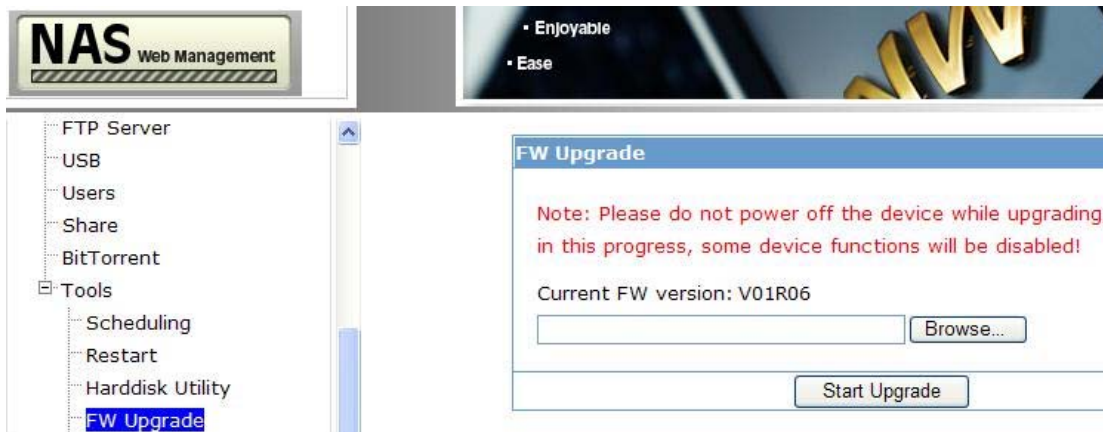
2. Connect PSU and LAN cable (do not connect USB cable)
3. Switch on the unit, click the DEFAULT button for 5 seconds, the Switch off and on again
4. Download latest NAS BT firmware from www.tsunami-tech.co.uk
5. Click netTool_v0.9.exe from CD



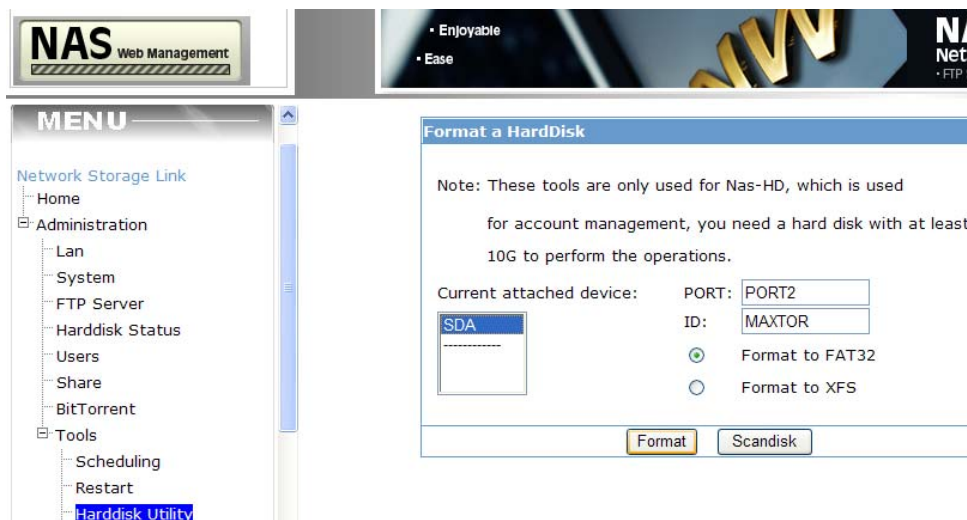
6. click 'Access via web'



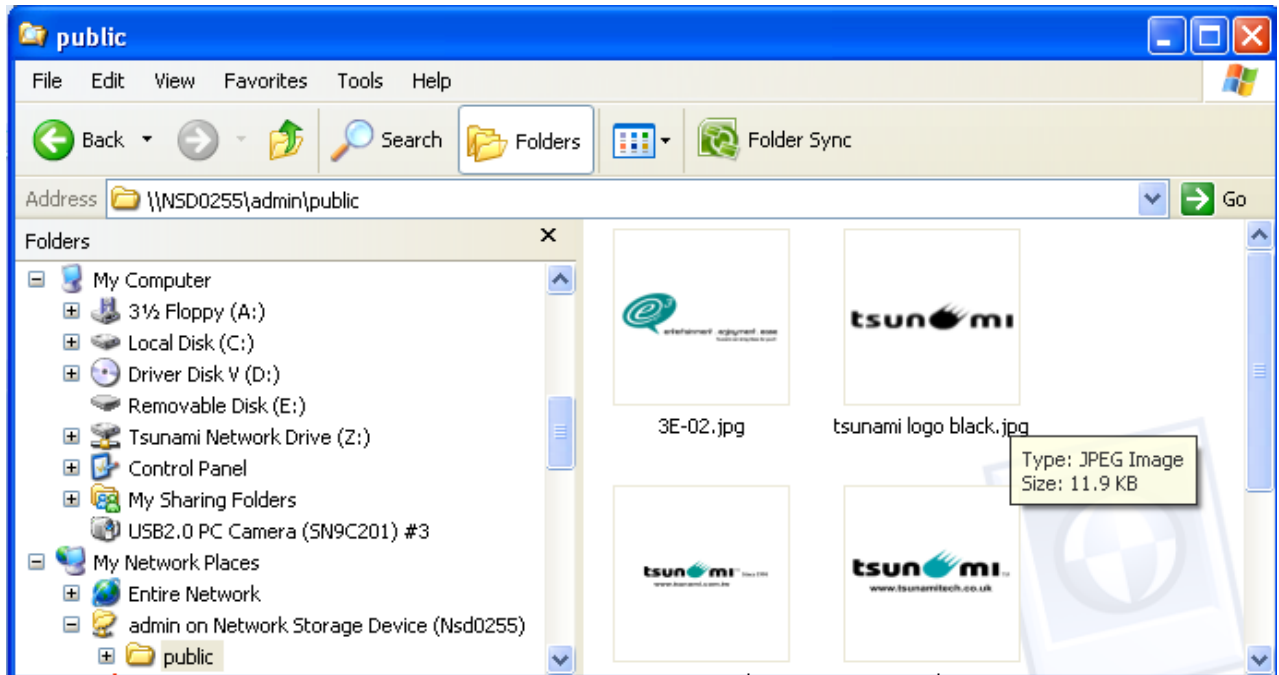
7. Upgrade the latest firmware accordingly



8. Close web management. Click 'Nettool' (from CD), then 'access via web' and format the Hard drive (when prompt, log-in=admin, pass=root)



9. Restart the computer, restart the NAS BT unit (switching the on/off switch)
10. You should be able to see the Hard drive connected to your network now



Thanks for using **tsunomi** products!