

### 3.5" HDD External Enclosure

#### eDATA 3500 ( NAS )

(Network Attached Storage Solution)

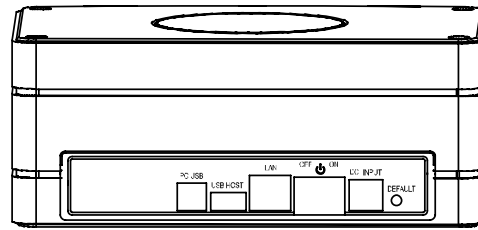
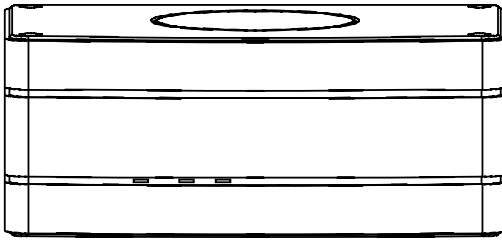
1.Note before using.....	1
2. Hardware Overview .....	1
2.1 Front view / Rear View .....	1
2.2 I/O layoutt .....	1
2.3 Leds display .....	2
2.4 System requirement .....	2
2.5 Packing content .....	2
3. Installation .....	3
3.1 Install a Hard Drive .....	3
3.2 Connect with LAN .....	4
3.3 Execute software ( NetTool ).....	5
4. How to use Net Tool .....	5
4.1.1 Refresh List .....	5
4.1.2 Access via Web .....	6
4.1.3 Enter Settings .....	7
5. How to use “Web” management function .....	8
5.1 Home .....	8
5.2 Administration .....	9
5.2.1 LAN .....	9
5.2.1.1 DHCP .....	9
5.2.1.2 Static IP .....	9
5.2.2 System .....	10
5.2.3 USB .....	10
5.2.4 Users .....	11
5.2.5 Share.....	12
5.2.6 BitTorrent .....	13
5.2.7 Tools .....	14

#### 1.Note before using

- Support HDD format FAT 32 , XFS
- Please install the “NetTool” software for easy start-up
- Please do format you HDD ( FAT 32 ) under “Web Management “ ( Path : Administration > Tools > Harddisk Utility, you can reach “Web management “ through the icon “ Access via Web “ from NetTool software.)
- “BT NAS version” support BT Server stand-alone operation , while PC is off , BT NAS is still working
- While using BT server function , must enable your DME setting in Router
- Please upgrade your Firmware from time to time via <http://www.tsunami.com.tw>
- While uploading any files , please note that language setting of files name / NAS / Client PC shall be the same to avoid any proceeding failure .
- While using DHCP , you may need DDNS , please contact with you ISP provider for more details.
- Setting for Router / Hub , please refer to its manual

#### 2.Hardware Overview

##### 2.1 Front view / Rear View



## 2.2 I/O layout

Ethernet Port : Connect your router or switch by Ethernet cable.

USB Ports:           A Type                       - Connect your USB device to NAS , Pen drive , Printer  
                          B Type                       - Connect with PC as a HDD enclosure

Power Supply: Power in                   - Connect power cord with NAS device  
                  Power On/Off               - Power I/O switch

Reset button:    20 seconds            - Push to reset the NAS to default setting. (including IP address)

## 2.3 Leds display

Front view:

Power LED-Blue

Access LED-Blue

Lan status LED-Blue (While LAN been connected correctly , LED shall be on all the time)

Rear view:

Lan power LED-Green

Lan status LED- Orange (While LAN been connected correctly , LED shall be on all the time)

## 2.4 System requirement

PC Users

- Using USB 2.0 interface: USB 2.0 Hi- Speed PCI card installed in your computer or the PC built in USB 2.0 host ports already
- Pentium X486 processor or above
- Microsoft Windows 98 SE, 2000 Professional, Me, or XP Home, Vista
- 20 MB hard drive space for supporting software

Mac OS Users

- Apple Macintosh G4 or G3 (blue and White G3 only) or iMac computer with built- in USB controller
  - Mac OS 8.6 or above, including OS X
- (Note: The Mac OS from 8.6 to 9.0 may need to download the upgrade driver ( Using USB 2.0 interface)
- 20MB hard drive space for supporting software

## 2.5 Packing content

- 3.5" HDD Enclosure x 1
- USB 2.0 Type A to Type B Cable x 1
- Lan cable x 1
- User Guide/Driver Disk
- Adaptor x 1
- Screw x 4 for HDD
- L type spanner x1

### 3.Installation

#### 3.1 Install a Hard Drive

- a) .With L type spanner enclosed , unload the 4 screws of top cover ( The side with FAN )
- b) Take off the aluminum frame with plastics cover ( Layer 1 )
- c) Take off the aluminum frame with plastics cover ( Layer 2 )
- d) Connect HDD with SATA cables & power connectors from PCB board and locate it on the metal tray
- e) Fasten the HDD with the metal tray with screws enclosed
- f) Re-locate the aluminum frame and plastics cover to main body
- g) With L type spanner , re-load and fasten the 4 screws on top cover

#### 3.2 Connect with LAN

The following are required when using the NAS.

- TCP/IP Protocol must be installed in your PC.
- Router or Switch(Hub) is available .
- USB storage device is available for copying files to NAS .

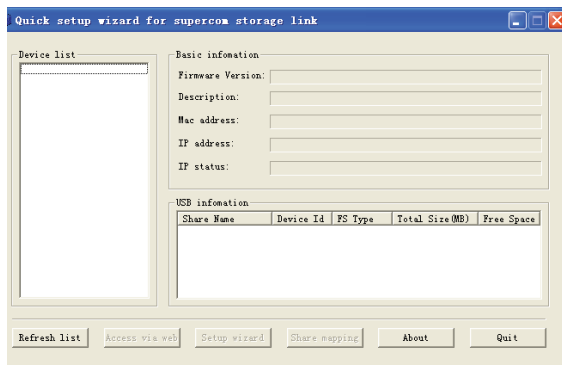
We will begin the installation of NAS.

- Connect the network cable to LAN port of NAS.
- Connect the USB devices to NAS. ( FAT 32 only )
- Connect the power to NAS .
- Booting up will take about 1 minute

#### 3.3 Execute software ( NetTool ) ( Only support Windows OS )

Execute from driver disk (Path :3.5" HDD enclosure\1xHDD,LanDisk-NAS\USB TO SATA\BT Server

NAS\Tools\),double click  ” NetTool\_v0.9”,Pic 01 shall pop up

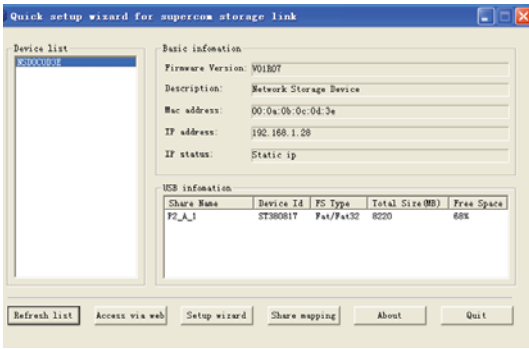


### 4.How to use Net Tool

It's a tool that allow us to search for every device on the network and show some information of NAS, it also allow us to access to the NAS web and change the setting of the device description, time zone, date, time, IP etc.

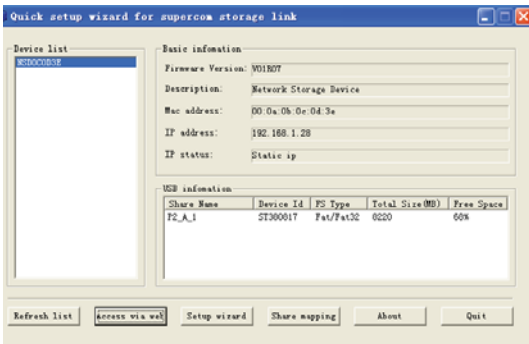
#### 4.1.1 Refresh List

Click“Refresh List” can help us to find all devices on the network (in the same subnet). And it can also be able to get the default IP (even the subnet is different). If we want to get the device from other subnet, the device's gateway must be leave in empty or set it to the IP of the device as Pic 02.

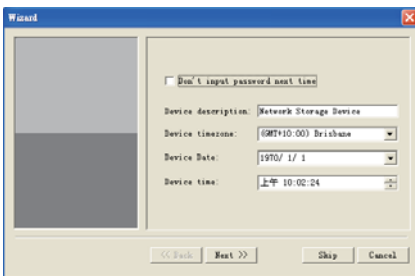


#### 4.1.2 Access via Web

Choose the function will link to the webpage of the chosen device Pic 03

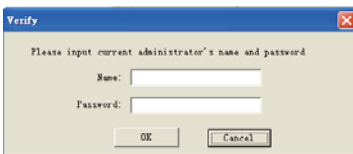


#### 4.1.3 Enter Settings

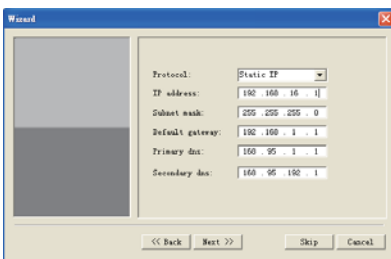


Checked the “Don’t input password next time” if you don’t want to enter the username & password next time when you want to enter the “Enter setting”.

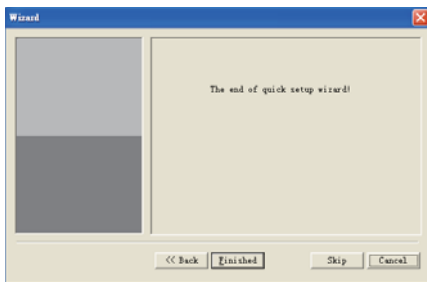
If we Unchecked it, it’ll ask for username and password next time.



We’re also allowed to change the description, time zone, date and time of the device from here. After you change to the setting you want, click on “Next”. If you want to leave the setting as it was, click on “Skip”



In this step we're can change the device IP, subnet, gateway and DNS. After the set was done, click on "Next". If you want to leave the setting as it was, click on "Skip"



Click on "Finished" to back to the Main menu

### 5.How to use "Web" management function

Just simply type in the NAS IP (default IP 192.168.16.1) in the browser to enter the NAS web.or just click "Access via web " in the "NetTool"



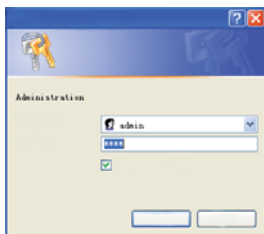
### 5.1 Home

The basic information of the NAS will be show at here.

### 5.2 Administration

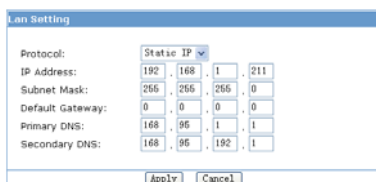
**The username and password will be requiring entering this part. The default username :**

**Admin , password : root**



### 5.2.1 LAN Settings

This section contains all LAN settings to configure the NAS to the network. Depending on how the network is set up, changes to this page may or may not be necessary. We can choose between DHCP and Static IP from the "Protocol"



### 5.2.1.1 DHCP

Selecting this option enables the NAS to request an IP and auto-configure itself to the network if there is a DHCP Server present

Note: If DHCP Client is enabled, but there is no DHCP server, the DNS-120 will fall back to the default IP address of 192.168.16.1.

Note : DHCP need to get a Client software to execute DDNS, please get the details from your ISP .

### 5.2.1.2 Static IP

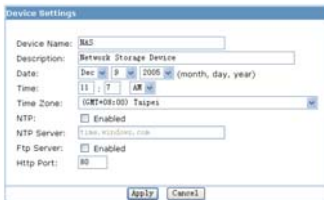
Click this option if there is no DHCP Server present on the network or and manually enter the network settings in the fields provided below option

- \* IP Address - Enter the static IP address
- \* Subnet Mask - Enter the Subnet Mask address
- \* Default Gateway - Enter the Gateway IP address
- \* DNS1 and DNS2 (both optional) - If available, enter those IP addresses here

If you need assistance in manually entering the above information, contact your network administrator for additional help in configuring the network settings.

### 5.2.2 System

The basic settings of NAS can be set at here. Including “Device Name”, “Description”, “Date”, “Time Zone”, “Http Port” and the NTP, FTP server can be enabling or disable in here too.



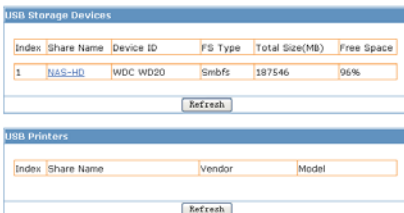
After the NTP option is enabled, you'll need to enter a valid NTP server to make it works correctly. It'll get the time from the server. (The selection for the date and time will be close after NTP is enabled)

**We're allowed to use the FTP to access to the device too after enabled.**

**PS: The FTP Username and password of Administration is, Username: Admin, Password: admin**

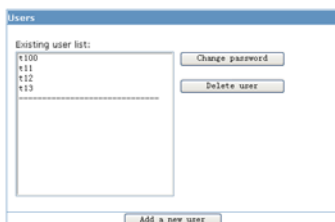
### 5.2.3 USB

The installed USB hard disk, Flash disk, and USB printer will show in here



### 5.2.4 Users

All the registered users shall be listed up here



Change Password: We can change the user's password from here



Delete User: We can delete the useless user account from here.

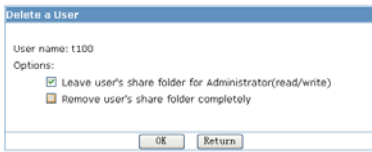
There are two options to choose in here:

1. Leave user's share folder for Administrator (read/write)

This option will move the user's folder into Administrator's folder, and only read/writeable for administrator (administrator's folder will be created automatically at the time of NAS hard disk is created).

## 2. Remove user's share folder completely

This will remove all files and folder of user's completely without any backup.



Add a new user: Type in the username, password we want.

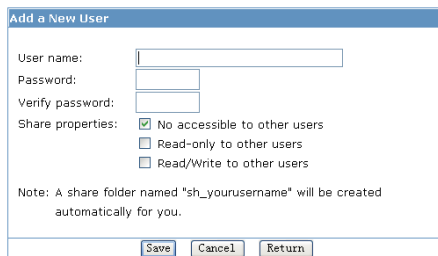
There are 3 properties can be choose:

No accessible to other users: Only the user himself can access to the folder.

Read-only to other users: The other user of NAS get in to this user's folder to read only.

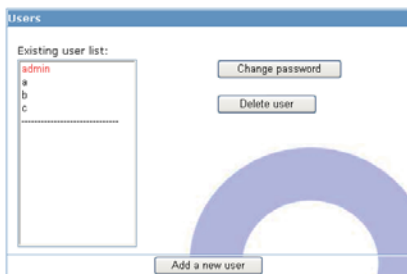
Read/Write to other users: The other user of NAS can read and write files in this user's folder.

Click on "Save" after you want to add the user. Or "Cancel" to clear the information (username, password), or "Return" to back to the previous screen



## 5.2.5 Share

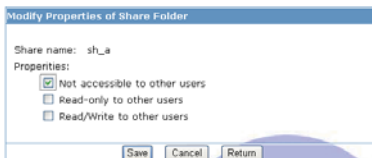
We can change the user properties If you want to change it after a user's has been added.



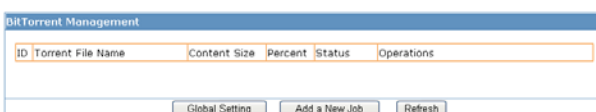
There'll be a default admin which can be use to login the admin folder and FTP. Default

Username: admin, Password: admin

Click on the user's we want to change (we can see what's his properties now after selected)., and click on "Modify Properties". And choose the properties we want, and "Save", or you can return to previous screen by clicking on the "Return" (properties won't be change)



## 5.2.6 Bit Torrent ( Support BT server version only )



### Global settings

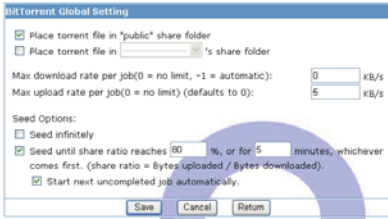
From here we can choose which folder (public or user's folder) we want to place the torrent files.

The max download and upload rate can be limited to the rate we want.

Seed options:

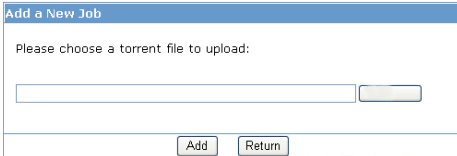
1. Seed infinitely

2. Or we can set the percentage of share ratio, or how many long we want to share.
3. We can choose whether to let it start next job automatically or not after the condition we set reached.

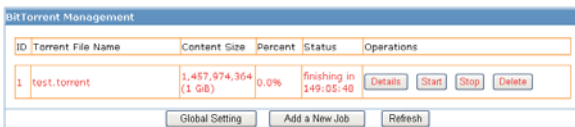


### Add a new job

Download a BitTorrent seed (\*.torrent) you want from the internet. And use this function to add the job.



After finished uploading the right .torrent file, click on “Start” to start the download



There are four operations we can do:

Detail: Show the detail information of the job.

Start: If you want to running the job clicks this button.

Stop: If you want to stop the job click this button.

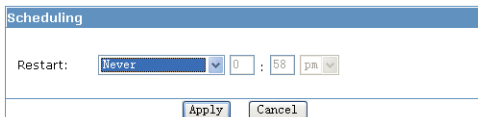
Delete: Stop and delete the job then you can add other jobs

PS:Can add up to 5 jobs. But only allow 2 running at the same time.

## 5.2.7 Tools

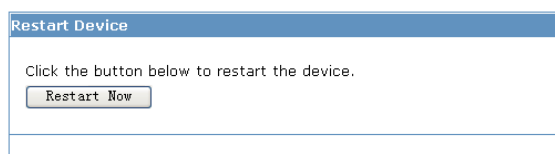
### 5.2.7.1 Scheduling

A schedule for the NAS to restart can be set in here



### 5.2.7.2 Restart

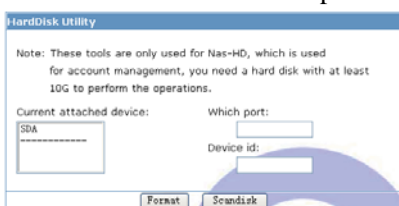
Restart the NAS immediately



### 5.2.7.3 Hard disk utility

**1.Format: Format a hard disk into a NAS hard disk from here (User management ONLY works on a NAS hard disk). And the size of hard disk minimum requirement is 10G.**

**2.Scandisk :Can be use to repair the damaged files in the hard disk. (NAS hard disk required).**



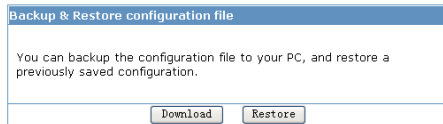
### 5.2.7.4 Firmware Upgrade

Whenever a new firmware released, we can upgrade the NAS firmware from here. This will takes about 1~2 min for the upgrade to complete.

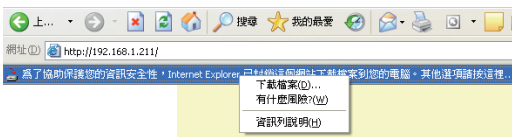


### 5.2.7.5 Save Config

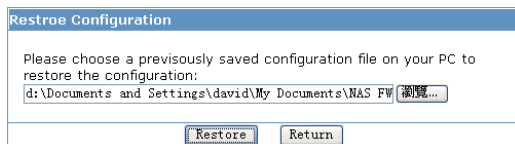
Here allow us to backup the setting we've set for future use. (Including the settings in LAN, System and Scheduling)



**Download:** The configuration file will be downloading. (Internet Explorer user will need to click on the protection bar on top and click choose "download files")

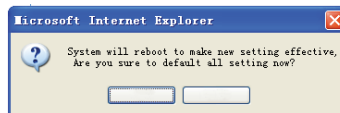
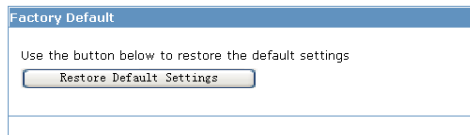


**Restore:** This function allow us to restore the previous setting by loading the configuration file we've saved before.



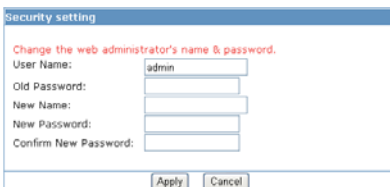
### 5.2.7.6 Factory Default

Only use this function whenever you want the device back to the Factory Default. NAS will be reboot for the new setting to be effective



### 5.2.7.7 Login Settings

The username and password to login the NAS can be change from here.



### 5.2.7.8 System Log

We can view the log from here

